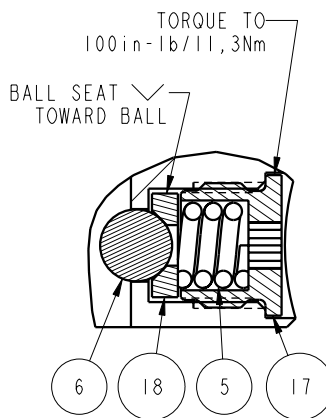
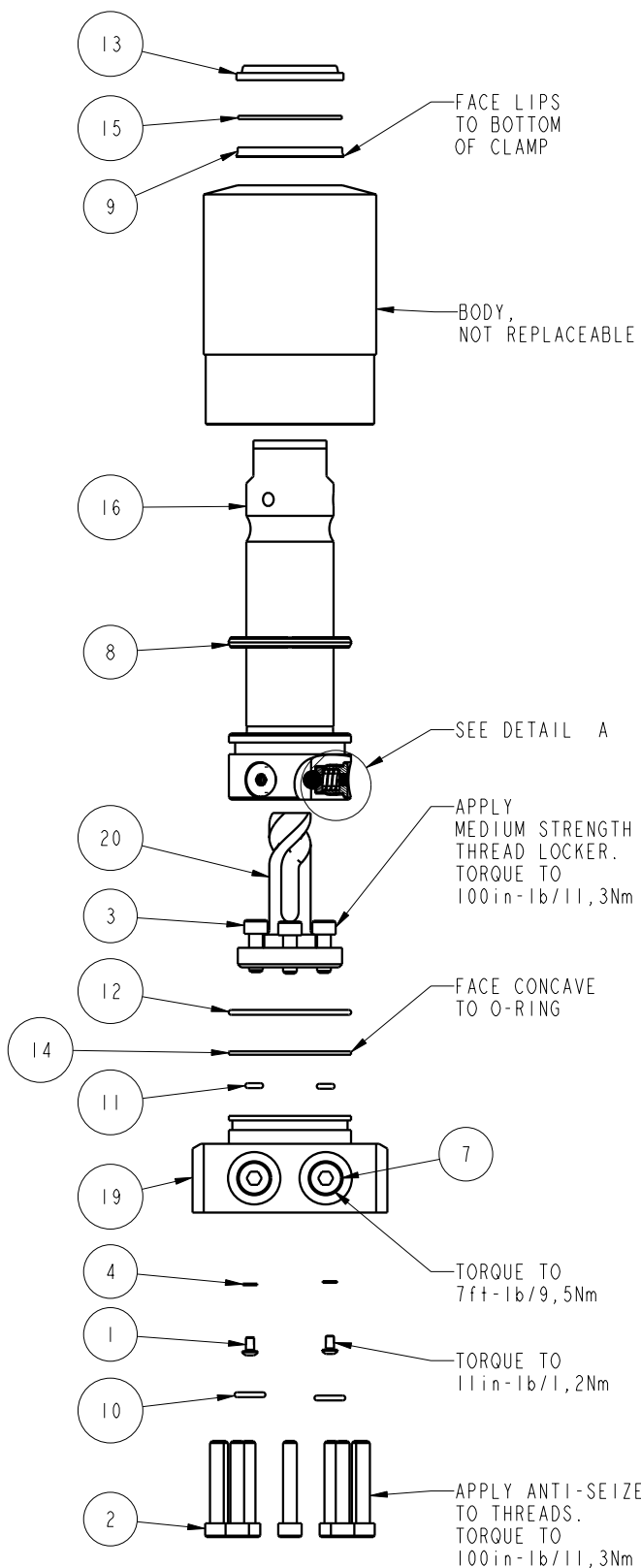


APPLY LUBRICANT TO ALL SEALS  
PRIOR TO INSTALLATION.  
DO NOT USE SILICONE TYPE LUBRICANTS.  
FOR PROPER ARM MOUNTING SEE IS1505.



DETAIL A  
SCALE 1.500



N/A	N/A	IS1505	INSTRUCTION SHEET, ARM INSTALLATION		
N/A	N/A	6V711042	SEAL KIT, FKM		
N/A	N/A	60711042	SEAL KIT, STANDARD		
20	1	81591822	CAM, SC, LP, 5000/22KN, RH, TC		
19	1	81541808	BASE, SC, BF, LP, 5000		
18	3	81532108	SEAT, BALL, SC, LP, TC		
17	3	81532107	RETAINER, SC, LP, TC		
16	1	81511811	PLUNGER, SC, LP, 5000&22KN, DA, TC		
15	1	39054008	BU RING, (-218), HYTREL	X	X
14	1	39054007	BU RING, (-030), 90 NBR	X	39054021
13	1	39053005	WIPER, SNAP-IN, (1-1/4), 90 FKM	X	X
12	1	39051042	O-RING, (-030), 1.814x.070, 90 HNBR	X	39V01021
11	2	39051041	O-RING, (-006), .114x.070, 90 HNBR	X	39V51041
10	2	39050042	O-RING, (-011), .301x.070, 90 AUD	X	39051025
9	1	39011060	SEAL, BEV, INSR, 1.25x.125x1.5, 85 HNBR	X	39052015
8	1	39011056	SEAL, CROWN, 1-9/16x1-3/4x5/32, 90AU	X	39V11056
7	2	30601144	PLUG, SOCH, SAE 4		
6	3	23650004	BALL, TUNGSTEN-CARBIDE. 250		
5	3	23350066	SPRING, COMP., 296X.06X.31X.21, 903		
4	2	21500200	WASHER, .124x.207x.024, COPPER		
3	3	21500031	SHCS, M5 x 0.8 x 14, ALY		
2	10	21500023	SHCS, M5 x .8-66 X 30MM		
1	2	21500019	SCREW, CAP, BTNH, M3 X 6, ALY		
No.	QTY	PART No.	DESCRIPTION	Std. Seal Kit	FKM Seal Kit

**PARTS LIST**



ASSEMBLIES AFFECTED  
14281800  
14281800F

PARTS LIST, ASSY, SC, LP, TC, BF, 5000, DA, RH  
SIZE A  
**PL7164**  
REV B

B	2596	RELEASE	JDW	12/06/13
REV	IN ACCORDANCE WITH ECN	EFFECTIVE DATE	REVISED BY	DATE
DRW BY:	JDW	<b>DRAWING STATUS: Released</b>		
DATE:	6-17-11	PRODUCTION APPROVED FOR RELEASED STATUS ONLY		

